

*MECHANICAL SECTIONS  
TRAINING EQUIPMENT*



*MADE IN ITALY*



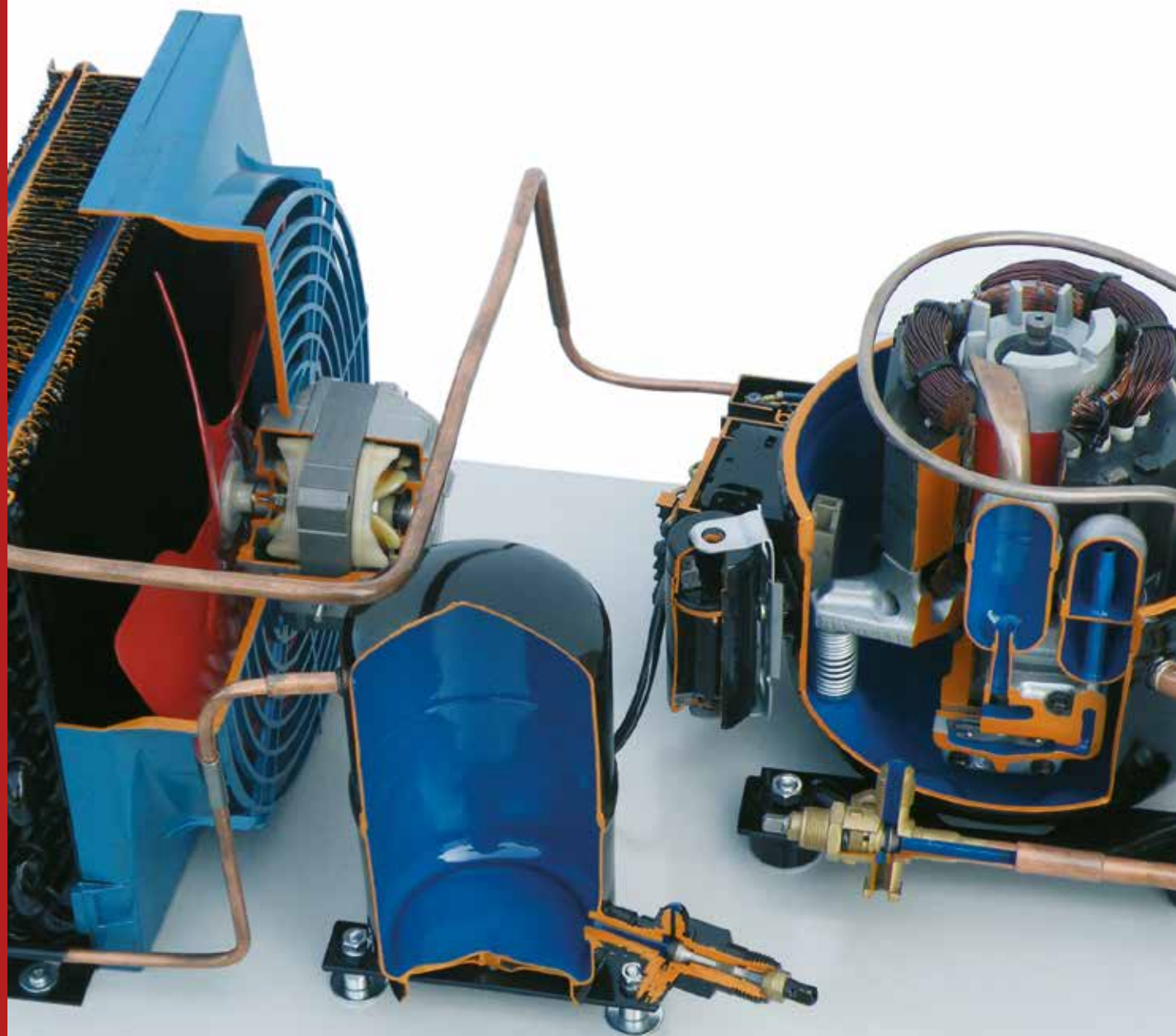
## **FLUID MECHANICS & REFRIGERATION**

---

### **INDUSTRIAL WATER PUMPS/TURBINES AND ACCESSORIES - CUTAWAY. ....170 - 179**

- Water pumps. ....
- Valves. ....
- Motor pumps. ....
- Turbines – francis and pelton . ....

### **COMPRESSED AIR AND INDUSTRIAL REFRIGERATION - CUTAWAY . ....180 - 183**





# Fluid Mechanics & Refrigeration

## VB 12999 IN-LINE PISTON PUMP (on base) - manual

Accurate section of an in-line piston pump showing:

- Pump head
- Suction and discharge valves
- Pistons
- Piston rods
- Bearings

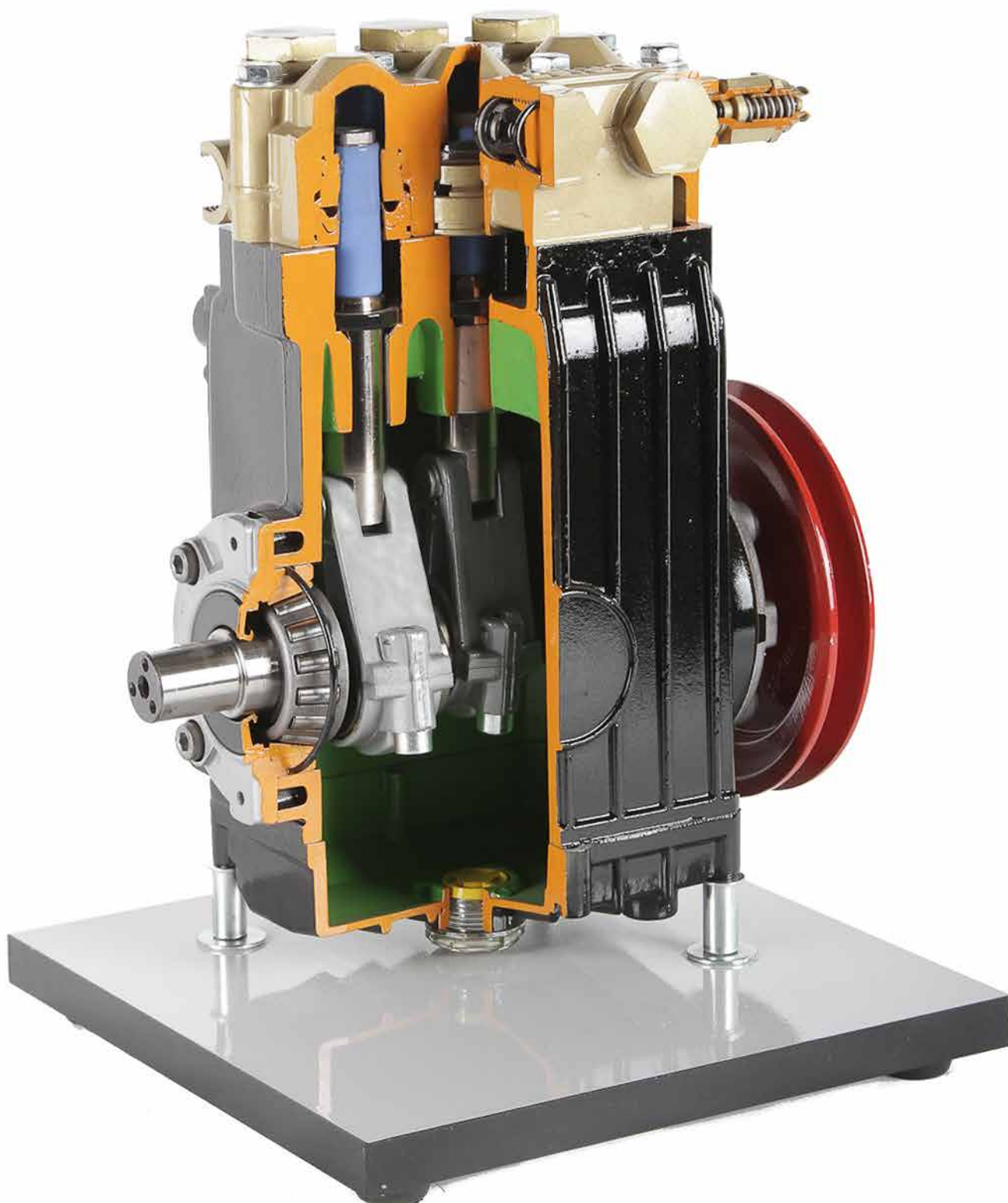
### VB 12999

#### Approx. weight and dim.:

*Cm:* 25x25x40h

*Net Weight:* kg 11

*Gross Weight:* kg 15



**VB 13000 SERIES OF 5 WATER PUMP ROTORS (on base) - static**

---

**VB 13010 MANUAL DIAPHRAGM PUMP FOR LIQUID TRANSFER (on base) - manual**

---



**VB 13020 SELF-PRIMING HIGH-LIFT CENTRIFUGAL ELECTRIC PUMP WITH BUILT-IN EJECTOR (on base) - manual**

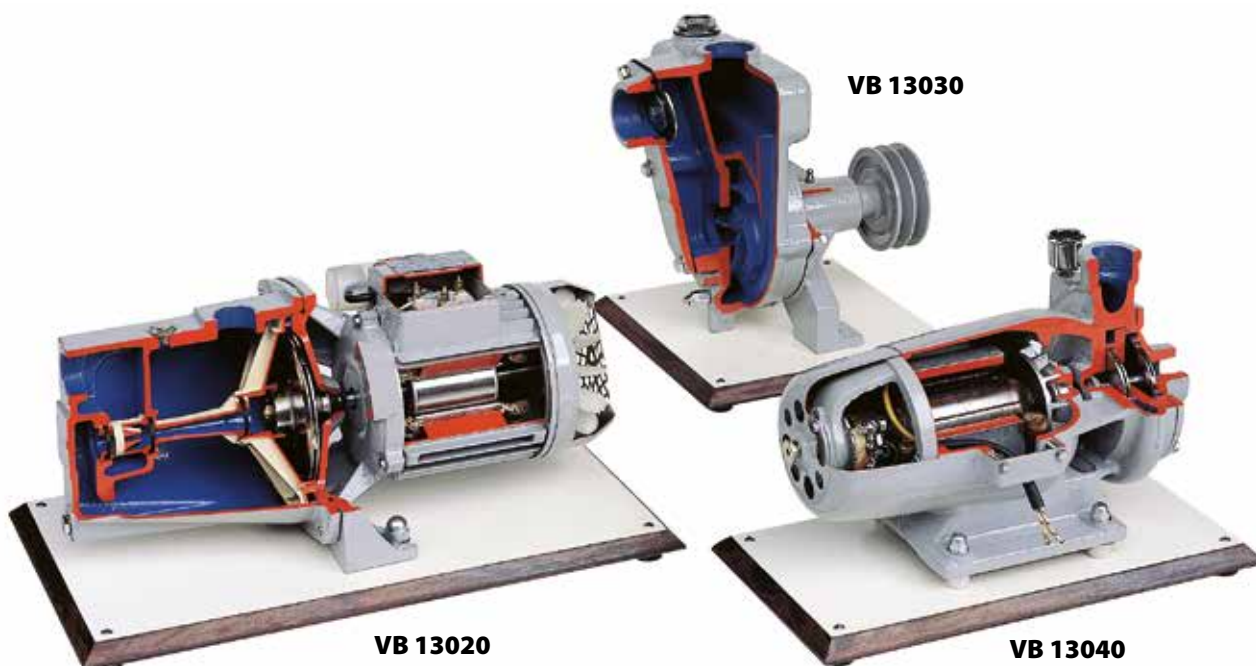
---

**VB 13030 SELF-PRIMING CENTRIFUGAL PUMP OPEN TYPE WHEEL FOR LIQUIDS CONTAINING SOLIDS - VALVE INCORPORATED IN THE SUCTION MOUTH (on base) - manual**

---

**VB 13040 CENTRIFUGAL ELECTRIC PUMP WITH PERIPHERAL CHANNELS (on base) - manual**

---



**VB 13000 - VB 13010**

**VB 13020 - VB 13030 - VB 13040**

# VB 13050 - VB 13060

VB 13050 MULTI-STAGE CENTRIFUGAL PUMP (on base) - manual

---

VB 13060 OPEN ROTOR CENTRIFUGAL ELECTRIC PUMP (on base) - manual

---



VB 13050

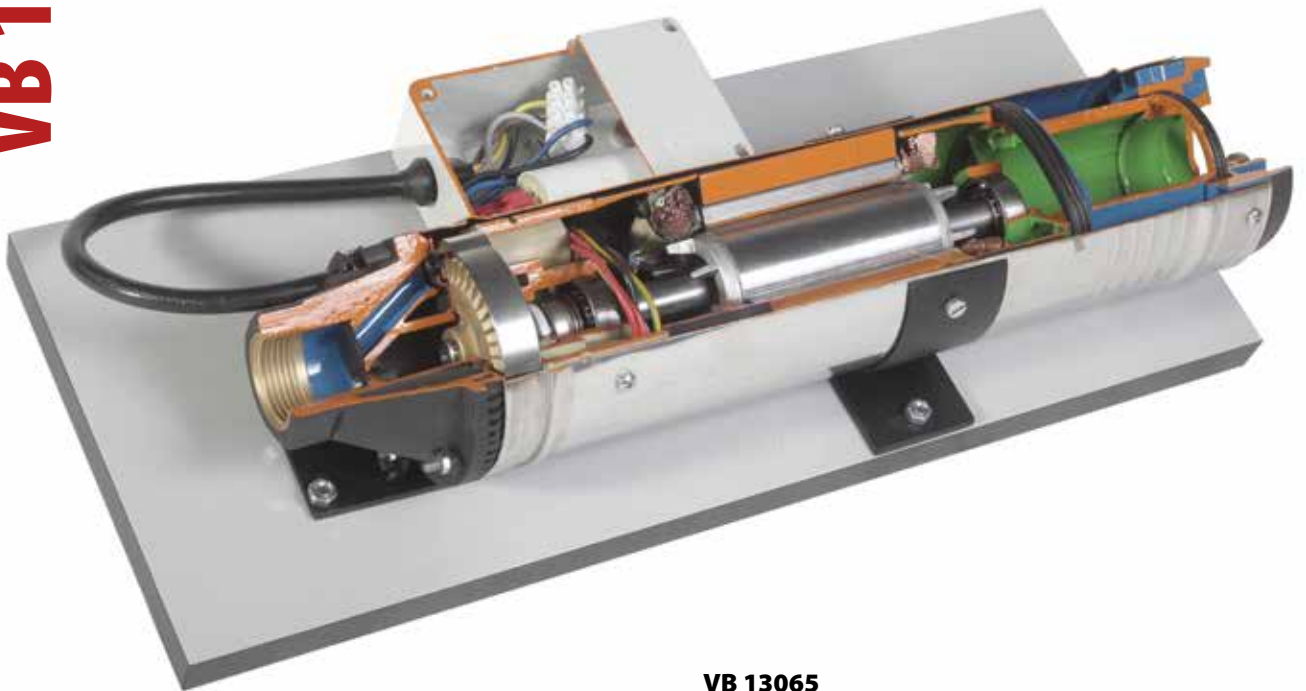


VB 13060

# VB 13065

VB 13065 SUBMERSED ELECTROPUMP (on base) - static

---



**VB 13065**

**Approx. weight and dim.:**

*Cm:* 50x20x15h

*Net Weight:* kg 8

*Gross Weight:* kg 15

**VB 13120 CUTAWAY HYDRAULIC/PNEUMATIC BALL VALVE (on base)**

---

**VB 13122 CUTAWAY STEAM GATE VALVE (on base)**

---



**VB 13120 - VB 13122**

**Approx. weight and dim.:**

*Cm:* 20x25x30h

*Weight:* kg 5

**VB 13124 CUTAWAY TWO-WAY VALVE WITH ELECTRIC MOTOR (on base)**

---

**VB 13126 CUTAWAY THREE-WAY BALL VALVE (on base)**

---

**VB 13128 CUTAWAY BALL VALVE WITH DRAIN OFF/COCK (on base)**

---



**VB 13126**

**VB 13124**

**VB 13128**

**VB 13124 - VB 13126 - VB 13128**

**Approx. weight and dim.**

*Cm:* 15x20x15h

*Weight:* Kg 2

**VB 13120 - VB 13122**

**VB 13124 - VB 13126 - VB 13128**



# VB 13130 - VB 13132 - VB 13134 - VB 13136

**VB 13130 CUTAWAY STANDARD BORE BALL VALVE (on base)**

---

**VB 13132 CUTAWAY STRAIGHT-WAY PLUG VALVE (on base)**

---

**VB 13134 CUTAWAY GATE VALVE (on base)**

---

**VB 13136 CUTAWAY COMPRESSION VALVE (on base)**

---



## **VB 13130 - VB 13132 - VB 13134**

### **Approx. weight and dim.:**

*Cm:* 15x15x15h

*Weight:* kg 1

## **VB 13136**

### **Approx. weight and dim.:**

*Cm:* 15x15x10h

*Weight:* kg 1

**VB 13138 CUTAWAY LINE STRAINER VALVE (on base)**

---

**VB 13140 CUTAWAY STANDARD CLAPET FULL NON-RETURN VALVE (on base)**

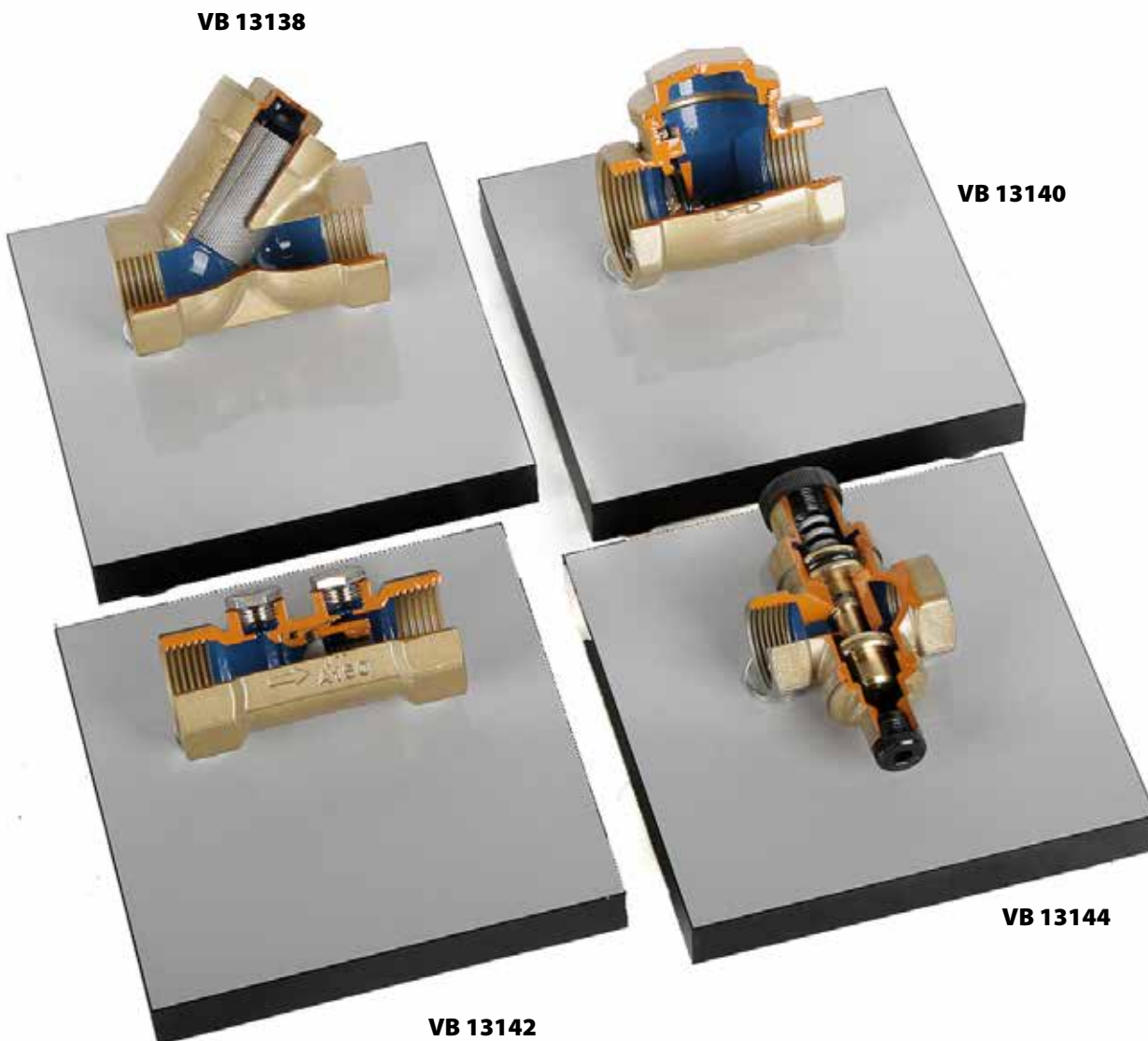
---

**VB 13142 CUTAWAY CHECK VALVE WITH DRAIN (on base)**

---

**VB 13144 CUTAWAY PRESSURE VALVE REDUCER WITH FEMALE CONNECTION (on base)**

---



**VB 13138 - VB 13140 - VB 13142 - VB 13144**

**VB 13138 - VB 13140 - VB 13142**

**Approx. weight and dim.:**

*Cm:* 15x15x10h

*Weight:* kg 1

**VB 13144**

**Approx. weight and dim.:**

*Cm:* 10x10x5h

*Weight:* kg 1

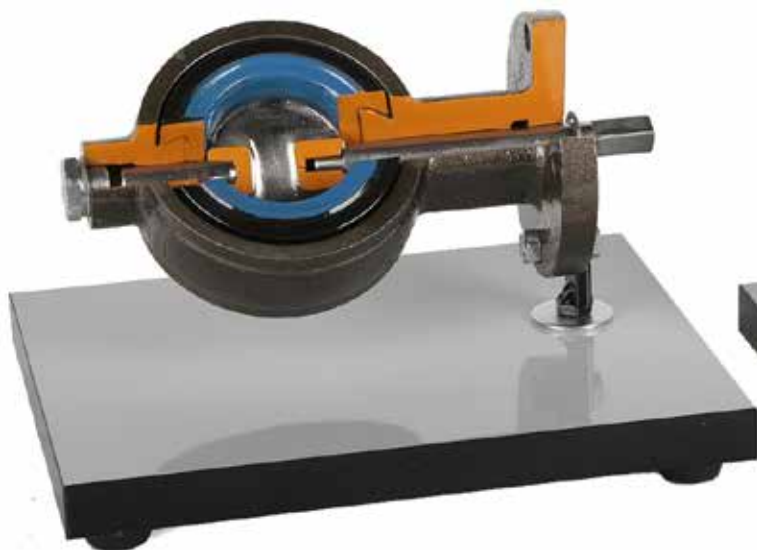
# VB 13146 - VB 13148

**VB 13146 CUTAWAY THROTTLE VALVE (on base)**

---

**VB 13148 CUTAWAY CIRCULATION PUMP (on base)**

---



**VB 13146**

**Approx. weight and dim.:**

*Cm:* 25x20x20h

*Weight:* kg 3

**VB 13148**

**Approx. weight and dim.:**

*Cm:* 15x15x20h

*Weight:* kg 2

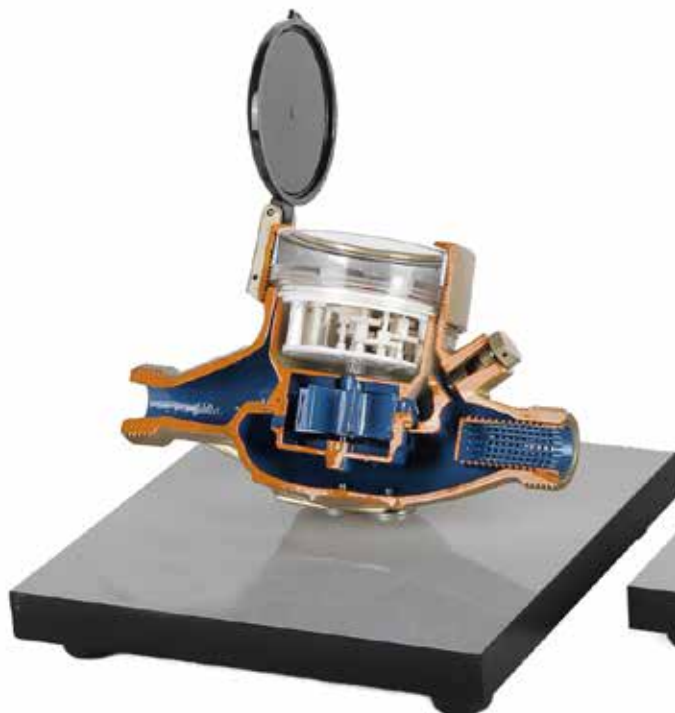
# VB 13150 - VB 13152

**VB 13150 CUTAWAY WATER METER (on base)**

---

**VB 13152 CUTAWAY FILTER (on base)**

---



**VB 13150**

**Approx. weight and dim.:**

*Cm:* 20x20x20h

*Weight:* Kg 2

**VB 13152**

**Approx. weight and dim.:**

*Cm:* 20x20x25h

*Weight:* Kg 2,5

**VB 13154 CUTAWAY BRASS FOOT TUBULAR VALVE (on base)**

---

**VB 13156 CUTAWAY YACHT CHECK VALVE WITH STAINLESS STEEL FILTER (on base)**

---



**VB 13154**

**Approx. weight and dim.:**

Cm: 15x15x15h  
Weight: kg 1



**VB 13156**

**Approx. weight and dim.:**

Cm: 15x15x20h  
Weight: kg 1

**VB 13158 CUTAWAY SELF-CLEANING FILTER + PRESSURE GAUGE (on base)**

---



**VB 13158**

**Approx. weight and dim.:**

Cm: 20x30x10h  
Weight: Kg 2

**VB 13154 - VB 13156**

**VB 13158**

# VB 13076

## VB 13076 SELF PRIMING MOTORPUMP (on base) - manual

### Main technical specifications:

- Model type 2 stroke engine
- Displacement: 25 cu. cm
- Specifications pump
- Suction 1"
- Delivery 1"
- Max suction head mt.6

### VB 13076

#### Approx. weight and dim.:

Cm:	30x30x40h
Net Weight:	kg 6
Gross Weight:	kg 10



# VB 13078

## VB 13078 CENTRIFUGAL MOTORPUMP (on table support) - manual

### Main technical specifications:

- Model type 2 stroke engine
- Displacement: 46 cu. cm
- Specifications pump
- Suction 1"
- Delivery 1"
- Max suction head mt.8

### VB 13078

#### Approx. weight and dim.:

Cm:	40x30x40h
Net Weight:	kg 10
Gross Weight:	kg 15



These cutaway models are carefully sectioned for training purposes, professionally painted with different colours to better differentiate the various parts, cross-sections, lubricating circuits, fuel system, cooling system etc. Many parts have been chromium, plated and galvanized for a longer life.

## VB 9180 FRANCIS TURBINE (on base) - manual

Sectioned model of "Francis" Turbine.  
Operated manually.



### VB 9180

#### Approx. weight and dim.:

Cm: 25x40x40h

Net Weight: kg 7

Gross Weight: kg 10

## VB 9190 PELTON TURBINE (on base) - manual

Sectioned model of "Pelton" turbine.  
Operated manually.



### VB 9190

#### Approx. weight and dim.:

Cm: 40x30x20h

Net Weight: kg 6

Gross Weight: kg 10

VB 9180

VB 9190

# VB 13071 - VB 13074

## VB 13071 RECIPROCATING COMPRESSOR (on base) - manual



### VB 13071

#### Approx. weight and dim.:

Cm: 40x40x60h  
Net Weight: kg 30  
Gross Weight: kg 40

## VB 13074 AIR COMPRESSOR (on base) - manual



Section of a typical alternative compressor used in braking systems.

### VB 13074

#### Approx. weight and dim.:

Cm: 20x20x30h  
Net Weight: kg 6  
Gross Weight: kg 10

# VB 13075

## VB 13075 SCREW COMPRESSOR (on base) - manual

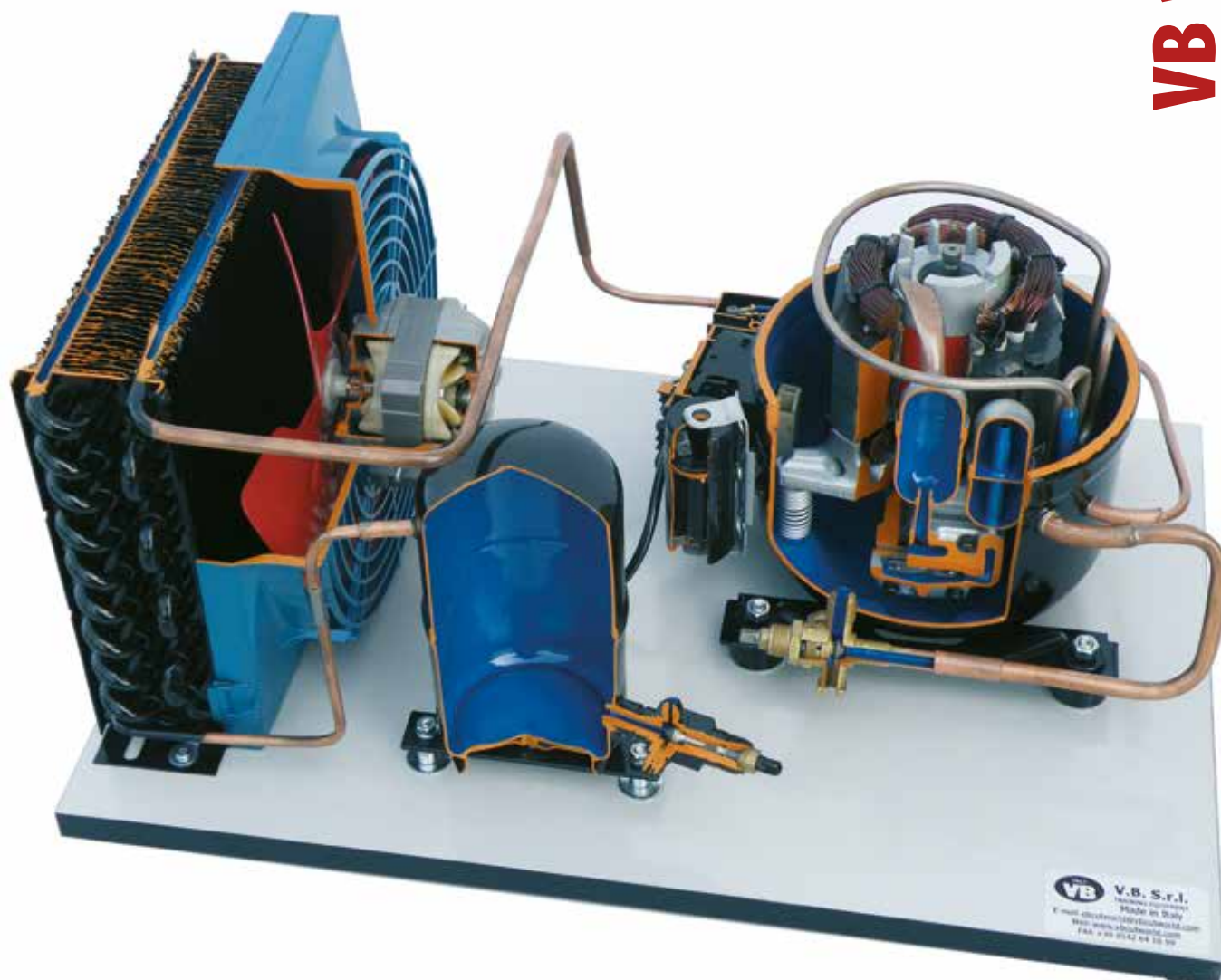


### VB 13075

#### Approx. weight and dim.:

Cm: 40x30x30h  
Net Weight: kg 25  
Gross Weight: kg 35

*These cutaway models are carefully sectioned for training purposes, professionally painted with different colours to better differentiate the various parts. Many parts have been chromium, plated and galvanized for a longer life.*



**Main technical specifications:**

- hermetic refrigerating compressor
- air condenser
- liquid receiver
- interception tap
- electro-fan + radiator

**VB 13080**

**Approx. weight and dim.:**

Cm: 70x50x45h  
Net Weight: kg 20  
Gross Weight: kg 35



# VB 13082

## VB 13082 HERMETIC COMPRESSOR (on base) - manual

### VB 13082

#### Approx. weight and dim.:

Cm: 25x30x30h  
Net Weight: kg 9  
Gross Weight: kg 15



# VB 13083

## VB 13083 OPEN COMPRESSOR (on base) - manual

### VB 13083

#### Approx. weight and dim.:

Cm: 25x30x25h  
Net Weight: kg 8  
Gross Weight: kg 15



## VB 13084 ROTATIVE COMPRESSOR (on base) - static

**VB 13084**



### VB 13084

#### Approx. weight and dim.:

Cm: 25x30x40h

Net Weight: kg 9

Gross Weight: kg 15

## VB 13085 SEMI-HERMETIC COMPRESSOR (on base) - manual

**VB 13085**

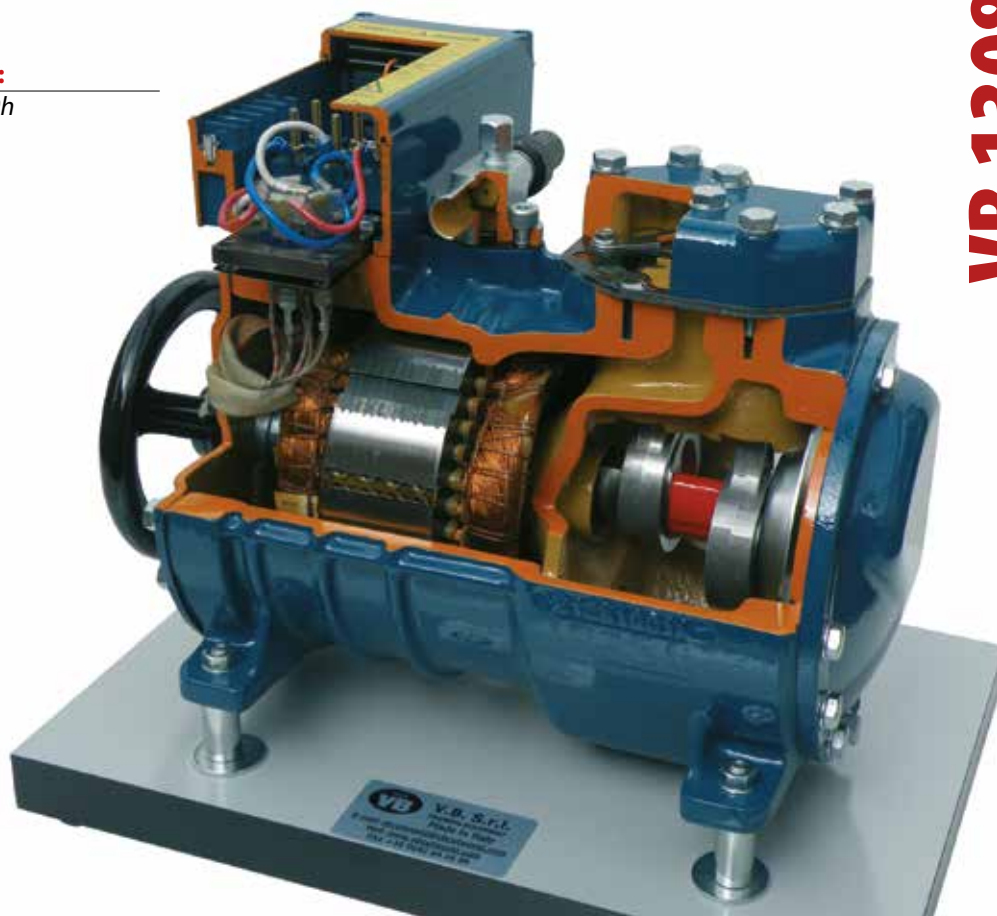
### VB 13085

#### Approx. weight and dim.:

Cm: 30x50x40h

Net Weight: kg 30

Gross Weight: kg 40



## GENERAL SALES CONDITIONS

---

### ORDERS

Orders are valid and binding for VB only after the receipt of written confirmation by the Customer, within 48 hours after verbal order. Order must be complete with the description of all elements, and, when necessary, with drawings to define them in a complete and unequivocal way. Any wrong interpretation or imperfection of the a.m. elements caused by an unclear order, shall give no right to any replacement, refund or discount whatsoever.

### MATERIALS

The samples shown are indicative only and they are not binding, considering the normal variation of the kinds of materials available on the market. All materials used, even first choice ones, are to be intended as commercial standard quality. As for painted materials, a retouch is to be considered as normal.

### PRICES

Pricelist agreed further to changes, are to be intended in € (Euro) and net of any discount; if not otherwise specified prices are considered for goods EXW our facilities.

### DELIVERY TERMS

The delivery terms run from the date of receipt of the order complete with the description of all necessary elements; they can be extended due to Force Majeure reasons, including lack of raw materials, energy supply, or because of mechanical breakdowns, lack of labour due to strikes, diseases, etc. If the delay is longer than 90 days, this gives right to the termination of the contract, but gives no right to any indemnity whatsoever.

### SHIPMENT

Goods are shipped at the Buyer's risk even if sold free destination.

In case of shipment by truck, VB declines any liability for possible damages to third parties or things which may be attributed to the carrier.

### PACKAGE

Returns of packaging are not accepted. If otherwise agreed, their return is to be intended free of charge or reimbursed at cost.

### COMMISSIONING

Commissioning assistance is excluded, except when expressly agreed in writing: in this case all expenses are at the Buyer's charge.

### PAYMENT

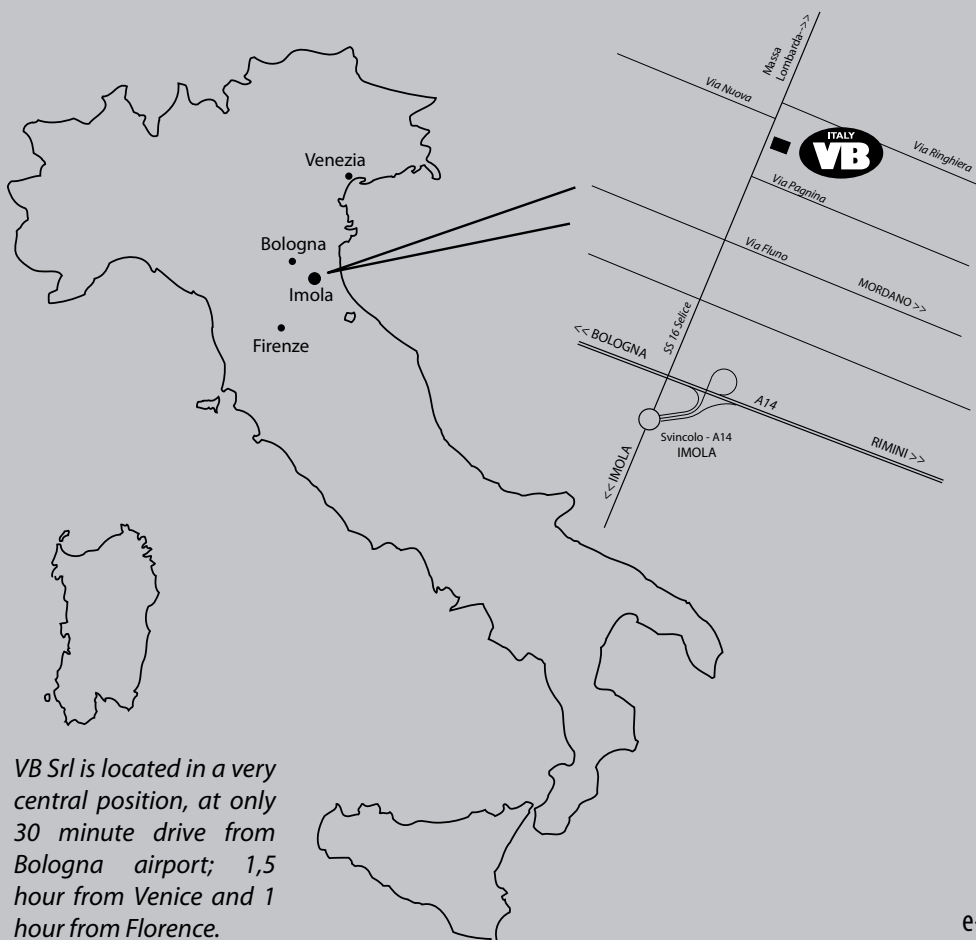
If not otherwise agreed, payments must be made at our offices in Mordano within the fixed terms. The non-payment on maturity, even if only partial, gives right to draw on the debtor, at the debtor's change, plus 20% yearly interest; furthermore it gives right to VB to suspend or cancel every supply on hand or to require the payment in advance. All suppliers are to be intended regulated by the conditional sale agreement till complete payment. VB shall be at same owner of the goods supplied and, in case of non-payment, even if partial, VB shall withdraw all supplies, and also keep the accounts already paid by the customer as partial cover. The invoice, even if formally received, does not involve the extinction of any obligation, in case it is covered by drafts or others.

### CLAIMS

All claims must be done in writing by registered letter within 8 days from receipt of the goods. VB, if the claim is well founded, shall provide for the replacement of the pieces; any refund is excluded.

### JURISDICTION

Any judicial dispute shall fall within the cognizance of Imola or Bologna Law-Court. VB has the right to previously submit the dispute to a Board of three Arbitrators, one to be appointed by VB, one by the Customer and the third by both of them or by the lower Court judge of Imola; in case of disagreement the above mentioned Board shall deliver a final Judgement.



*VB Srl is located in a very central position, at only 30 minute drive from Bologna airport; 1,5 hour from Venice and 1 hour from Florence.*

**VB s.r.l.**

Via Selice, 13

40027 Mordano (Bo) - Italy

Tel. +39 0542 641735

Fax +39 0542 641699

[www.vbcutworld.com](http://www.vbcutworld.com)

e-mail: [vbcutworld@vbitaly.com](mailto:vbcutworld@vbitaly.com)